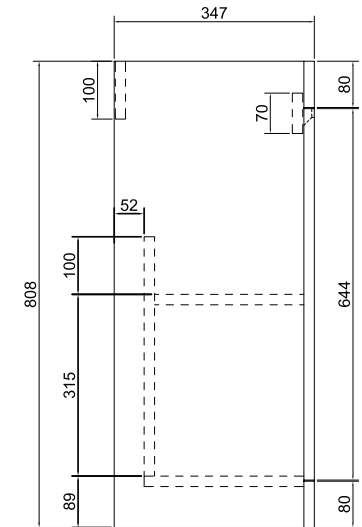
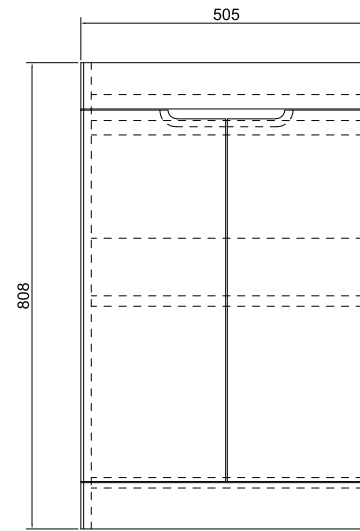


Atmore 550mm 2 Door Floor Unit - Short Projection

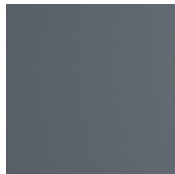
RANGE	Atmore
CODE(S)	MSFAT55FMWH MSFAT55FMGR MSFAT55BA
SIZE (MM)	H 868 x W 550 x D 370 inc. Basin
FINISH	Matt/Gloss
BASIN MATERIAL	Ceramic
TAP HOLE(S)	One
NET WEIGHT	Unit: 22.3 Kg , Basin: 12.1 Kg
ADDITIONAL INFORMATION	<ul style="list-style-type: none"> Compatible with 550mm 1th Ceramic Basin- Short Projection Off Set Overflow



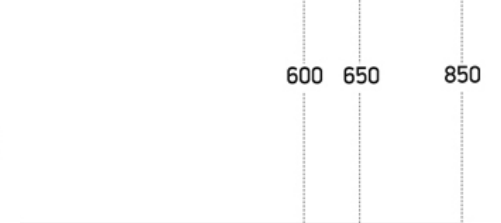
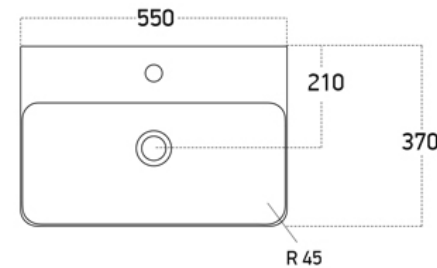
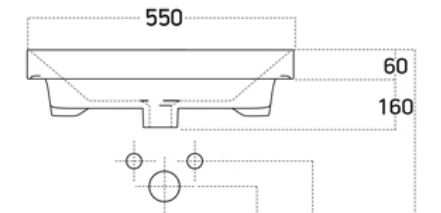
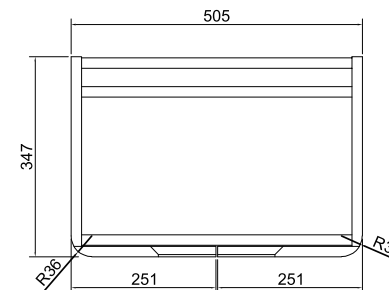
COLOUR OPTIONS:



White
Gloss



Grey
Matt



The information contained on this page was correct at date of issue. Fitting dimensions are provided as a guide only. Some variation may occur due to manufacturing tolerances. We pursue a policy of continuing improvement in design and performance of our products and so reserve the right to change specifications without prior notice.